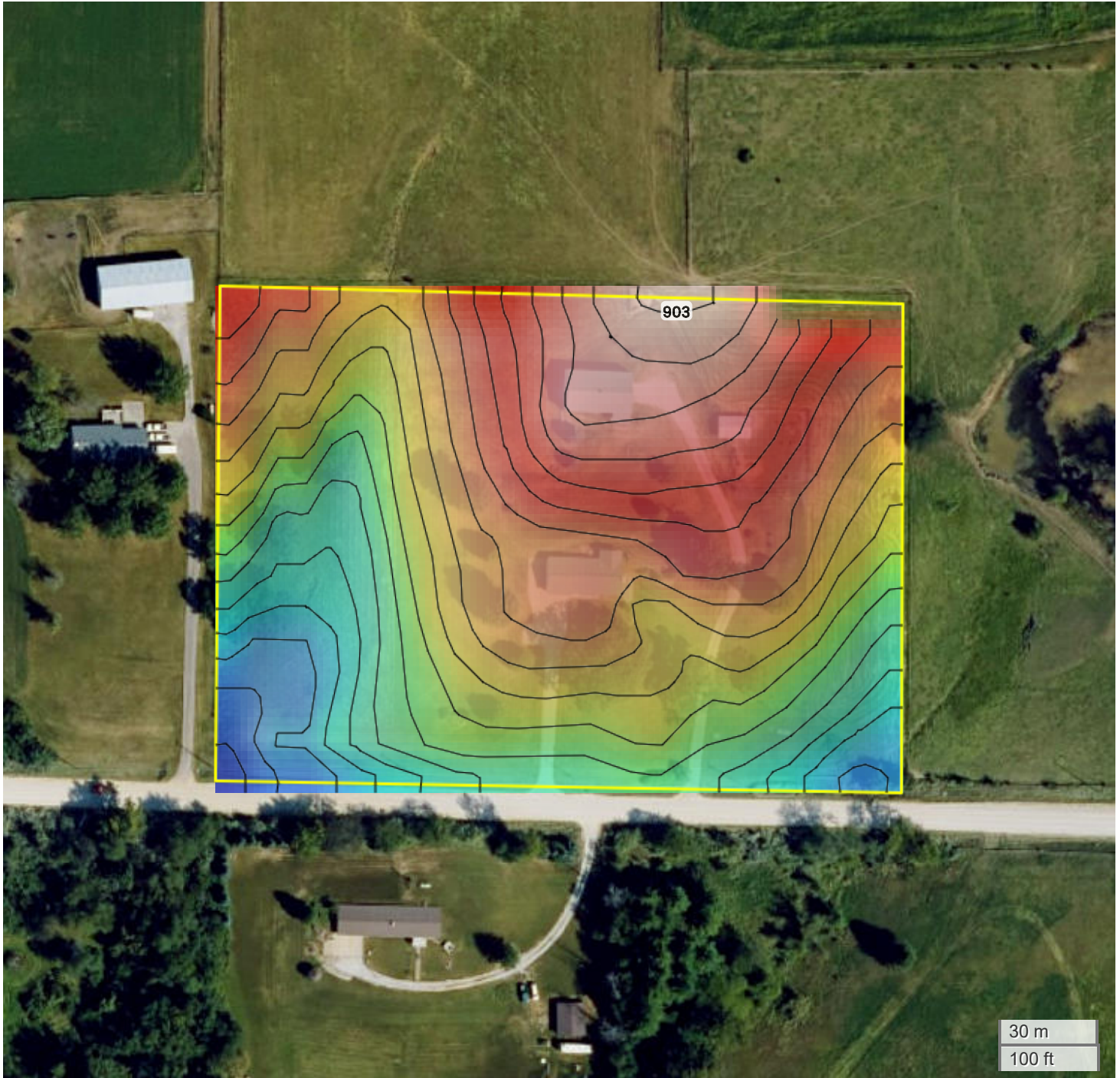




DAROLD AND JANET VAN RYSWYK REVOCABLE TRUST (7.48 AC TOTAL, 0 AC TILLABLE)

TOPOGRAPHY



852 ft

903 ft



Center: 41.350882, -93.514272

28-76N-23W

Lincoln Township

Warren County, IA

Source: USGS 10m DEM

Interval(ft): 3

Max: 903.0 ft

Min: 852.0 ft

Range: 51.0 ft

Average: 877.5 ft



FarmWorth, LLC makes no warranties, express or implied, regarding the accuracy of any information provided through FarmWorth.com. User is solely responsible for independently verifying all information prior to use and waives any claims against FarmWorth, LLC arising from inaccuracies in such information.